

UKS2 Mixed Media

Key Vocabulary

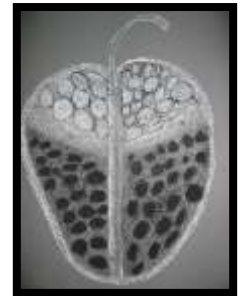
Balance	Even distribution of colour and proportion.
Gesture	The application of paint with a free-hand gesture.
Impress	To mark make using tools on clay.
Patterns	A decorative design.
Position	A place where an object has been located or put.
Proportion	Mark making that is of relative size to the subject.
Shape	The external form, contours, or outline of someone or something.

Explore

In this stage we will begin by looking at the work of great artist, architects and designers in the context of Braque, Claesz and Kalf. We will compare the work of these artists and consider the following:

- *Why do you think the artist made it?*
- *What can you see in the picture?*
- *How does the image make you feel?*

Next, we will cut open a selection of fruits/vegetables to see the inside and all the colours and textures. Using the drawing materials, try to explore re-creating the colours, patterns and textures in our sketchbooks.



Skills and Create

Making a clay tile

During this stage we will measure the amount of clay needed to make our tile. We will press, knead and roll the clay. We will roll out the clay 15cm by 15cm for the tile.

Drawing onto clay

We will make a viewfinder to focus on areas of our fruit drawings to impress onto our tiles. The viewfinder acts as a guide and we will use the tiles to impress lines and patterns based on the viewfinder segment.

Colour

When we are happy with our tile, we will seal it with an acrylic paint (slip). When the slip is starting to dry we will start to etch into the slip and add pattern and detail.

Artists



Caravaggio
(1572-1610)

Michaelangelo Caravaggio was particularly good at painting people and objects exactly as they looked. His paintings are famous for their dramatic use of light.

Basket of Fruit (1595-1596) Caravaggio



Pieter Claesz was a Dutch Golden Age painter of still lifes.

Still Life with Cheese (1615)
by Pieter Claesz



Still Life with a Pilgrim Flask, Candlestick, Porcelain Vase and Fruit
by Willem Kalf